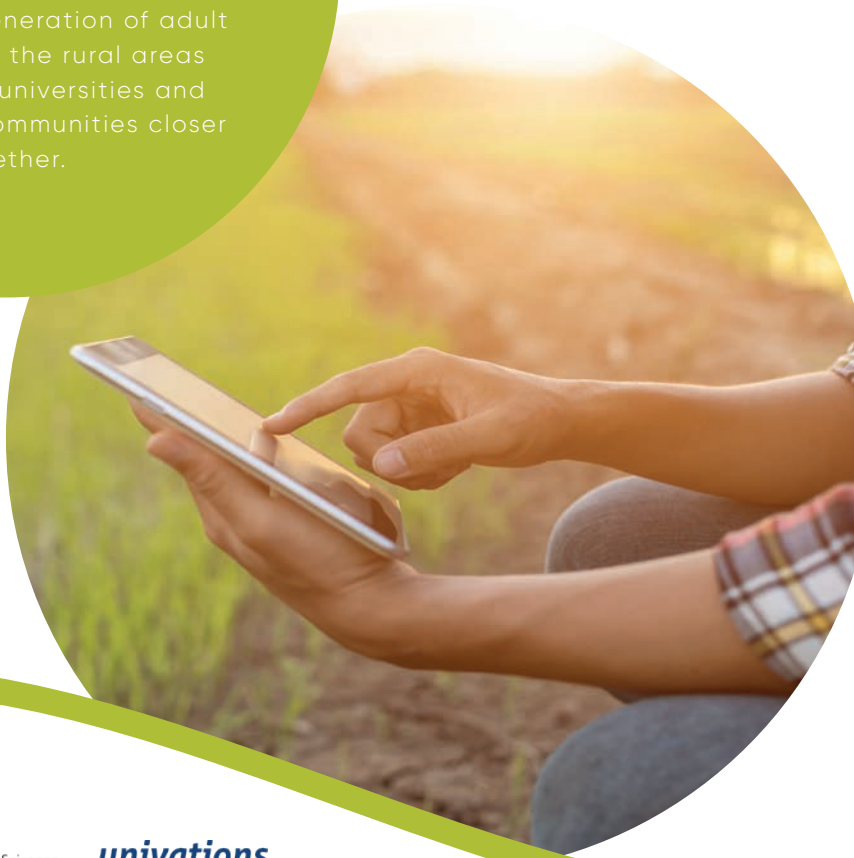


With **Advancing Rural Development through Entrepreneurship Education for Adults (ARDENT, project 2019-1-DE02-KA204-006491)**, we aim to enhance entrepreneurial lifelong learning opportunities at universities, inspire a new generation of adult job creators in the rural areas and bring the universities and their regional communities closer together.



Within ARDENT, we aim to create an impact on the rural entrepreneurship development by producing three outputs.



### **RURAL COUNCIL BUILDING TOOL-BOX**

A guideline for creating rural councils, unifying the region and enabling cross-institutional collaboration



### **RURAL CONSULTATION ROADMAP & NEEDS ANALYSIS REPORTS**

Highlights rural needs and assists in bridging the divide between the HEI and its regional community through regional consultation events that require innovative solutions



### **RURAL ENTREPRENEURSHIP COMMUNITY-BASED LEARNING PACK**

The basis for a two-semester training course, which develops relevant entrepreneurial skills through hands-on projects addressing societal and business challenges

## **FIND US AT:**

[www.ruralentrepreneurs.eu](http://www.ruralentrepreneurs.eu)

ARDENT: Rural Entrepreneurship



@ARDENT\_project



@ARDENTproject



#### **Thorsten Kliewe**

Deputy Managing Director & Research Director at Science-to-Business Marketing Research Centre  
*Project Director*  
[kliewe@fh-muenster.de](mailto:kliewe@fh-muenster.de)